

Murphy Painting & Design

Murphy Painting & Design

Murphy Painting & Design

Murphy Painting & Design

Murphy Painting & Design

Murphy Painting & Design



Highlander (5) Length: 151 feet. In service: November 1985

Murphy Painting & Design



Grand stairway
to guest quarters and
sundeck lounge



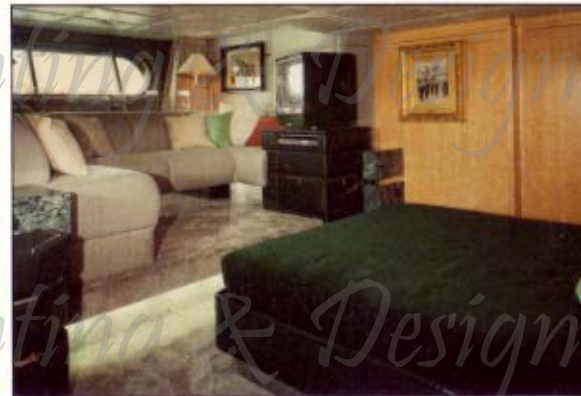
Fantail salon



Main salon



Engine room



Master suite

Murphy Painting & Design

Murphy Painting & Design

Murphy Painting & Design

Murphy Painting & Design

Murphy Painting & Design

Murphy Painting & Design

Murphy Painting & Design



The dining salon, where you will be served your sumptuous buffet



Climate-controlled wine locker with 180-bottle capacity



ABOVE: Much of the art aboard the *Highlandeur* has a nautical theme, including Dufy's watercolor *On Board the Queen Mary*, 1937, in the dining salon. Among the seagoing memorabilia are the Albert Cup, 1868, and silver and crystal serving pieces from the *Normandie*.

entertained aboard her. She was such a hot ticket last Fourth of July for the relighting of the Statue of Liberty that *The New York Times* ran an article about the jockeying for invites. The guest list read like a hybrid of the Forbes 400, Debrett's and Who's Who.

One entire wall in the main salon is covered with photographs of familiar faces who have sampled the estimable life aboard the various *Highlandeurs*. Forbes calls it "the rogues' gallery." With this kind of traffic—parties for over a hundred are fairly routine—Bannenberg's problem was how to

provide space and flow for large crowds, yet not have the yacht echoing with emptiness when only family members were aboard.

He solved it a number of ways. The walls are paneled in a warm, honey-colored wood—bird's-eye maple. The banquettes are modern, but comfily overstuffed. Several strategically placed old pieces provide an inconspicuous note of formality. Then there are the ceilings. They're all padded, covered in quilted gray leather that helps quiet engine and generator noise and creates a womblike feeling.

"It's thoroughly cozy with only three people on board," says Forbes.

Flanking the door to the dining room are two mahogany pilasters from the stateroom of Queen Victoria and Prince Albert's Royal Yacht *Osborne*. Bannenberg has ingeniously taken a stained-glass door, also from the *Osborne*, and mounted it horizontally above the dining table. Backlit, it interrupts the acres of quilted leather and creates the illusion of a high ceiling. Two sterling-silver stag's-head candelabra perched on the table lend the rather improbable feeling of a

OPPOSITE: Flanking the door to the dining salon are pilasters from Queen Victoria's stateroom aboard the Royal Yacht *Osborne*. Stag's-head candelabra recall the Forbes family crest. The centerpiece is the "Jolly Jack Tar" trophy. Chairs are Chippendale.

Murphy Painting & Design

Murphy Painting & Design

Murphy Painting & Design

Murphy Painting & Design

Murphy Painting & Design

Murphy Painting & Design

Murphy Painting & Design

Murphy Painting & Design

"You wouldn't describe it as modern or traditional," says Forbes of the Highlander's décor. "It's just a fresh new thing." Barmenber covered the ceilings throughout with quilted leather. Accenting the main salon is *Moby Dick*, a Steuben glass sculpture by Sidney Waugh.